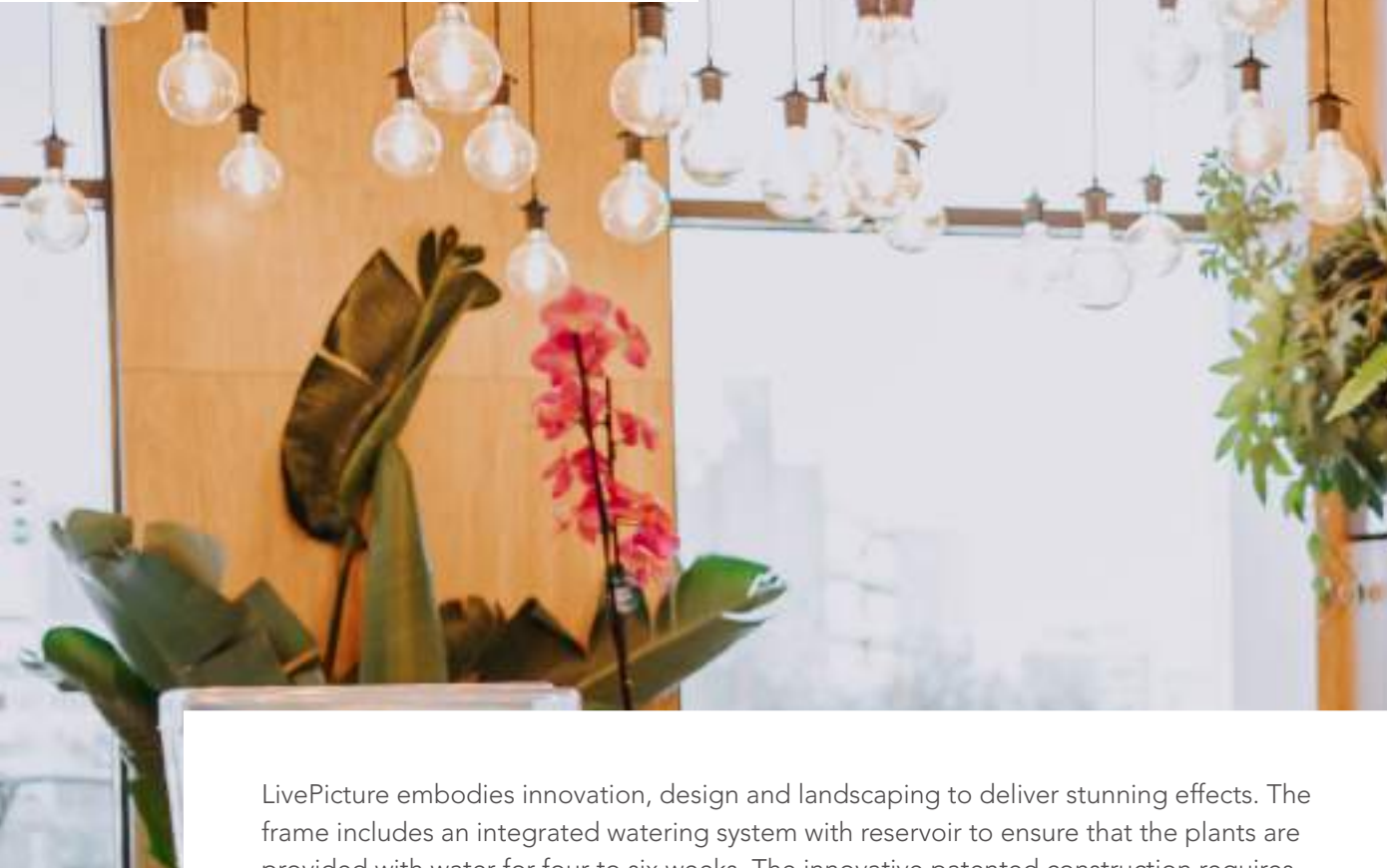


# LIVEPICTURE





# LIVEPICTURE



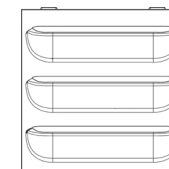
LivePicture embodies innovation, design and landscaping to deliver stunning effects. The frame includes an integrated watering system with reservoir to ensure that the plants are provided with water for four to six weeks. The innovative patented construction requires no electrical connection. LivePicture can be easily and quickly mounted on any wall using just a few screws.

## SPACE-SAVING

LivePicture is a stylish and space-saving solution to include plants in any interior environment. Rooms with limited space for plant pots will benefit from the wall-mounted placement of LivePicture. LivePicture requires minimal maintenance.



## LIVEPICTURE MATERIALS



**Cassettes:** The cassettes are made of breathable Expanded Polypropylene (EPP) material on the front side, Polypropylene (PP) on the backside. The cassette is fitted with microfibre textile with capillary action consisting of 80% polyester and 20% polyamide. Returned cassettes are fitted with a new microfibre textile on our production site and reused.



**Frame:** The frame of the LivePicture is made of powder coated steel and is fully recyclable.



**Tank:** The tank within the LivePicture is made of polyvinylchloride (PVC) and is fully recyclable.

**Plants:** The plants used in the pre-cultivated cassettes in the LivePicture are grown at the Dartplant production site under the “On the way to PlanetProof” certification. This independent certification proves that the plants for the LivePicture have been produced more sustainably and are therefore a better choice for nature, climate and animals. The online Mobilane PlantGuide gives an overview of selected plant species that are recommended for planting on the LivePicture



# UNIQUE FEATURES

Unique visual impact

Interchangeable plant cassettes and frame

No electricity or pump required

Fully recyclable

Water tank for 4 - 6 weeks,  
equipped with full and empty indicators

Integrated watering system

Quick and easy installation



# BENEFITS

Vertical greenery takes up little space

Improves the indoor climate and air quality

Helps increase concentration, productivity  
and general well-being

Improves the acoustics in a room

Sound-dampening effects

Lowers stress levels



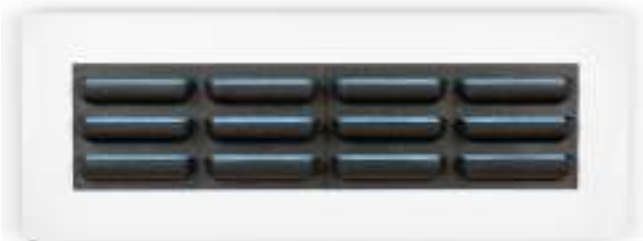
RANGE



5cm 7cm



LivePicture 1



LivePicture 4



LivePicture 2



LivePicture 3

SPECIFICATIONS LIVEPICTURE

Product	Dimensions (w x h x d)	Number of cassettes	Weight (empty)	Volume (in litres)
LivePicture 1	72 x 72 x 7 cm	1	12.0 kg	14 liter
LivePicture 2	112 x 72 x 7 cm	2	16.6 kg	19 liter
LivePicture 3	152 x 72 x 7 cm	3	21.1 kg	24 liter
LivePicture 4	192 x 72 x 7 cm	4	25.5 kg	29 liter

AVAILABLE COLOURS



White



Black



Custom

The LivePicture is available in white (RAL 9003) and black (RAL 9004) as a standard and can be supplied in any RAL colour on request.

# INSTALLATION & MAINTENANCE



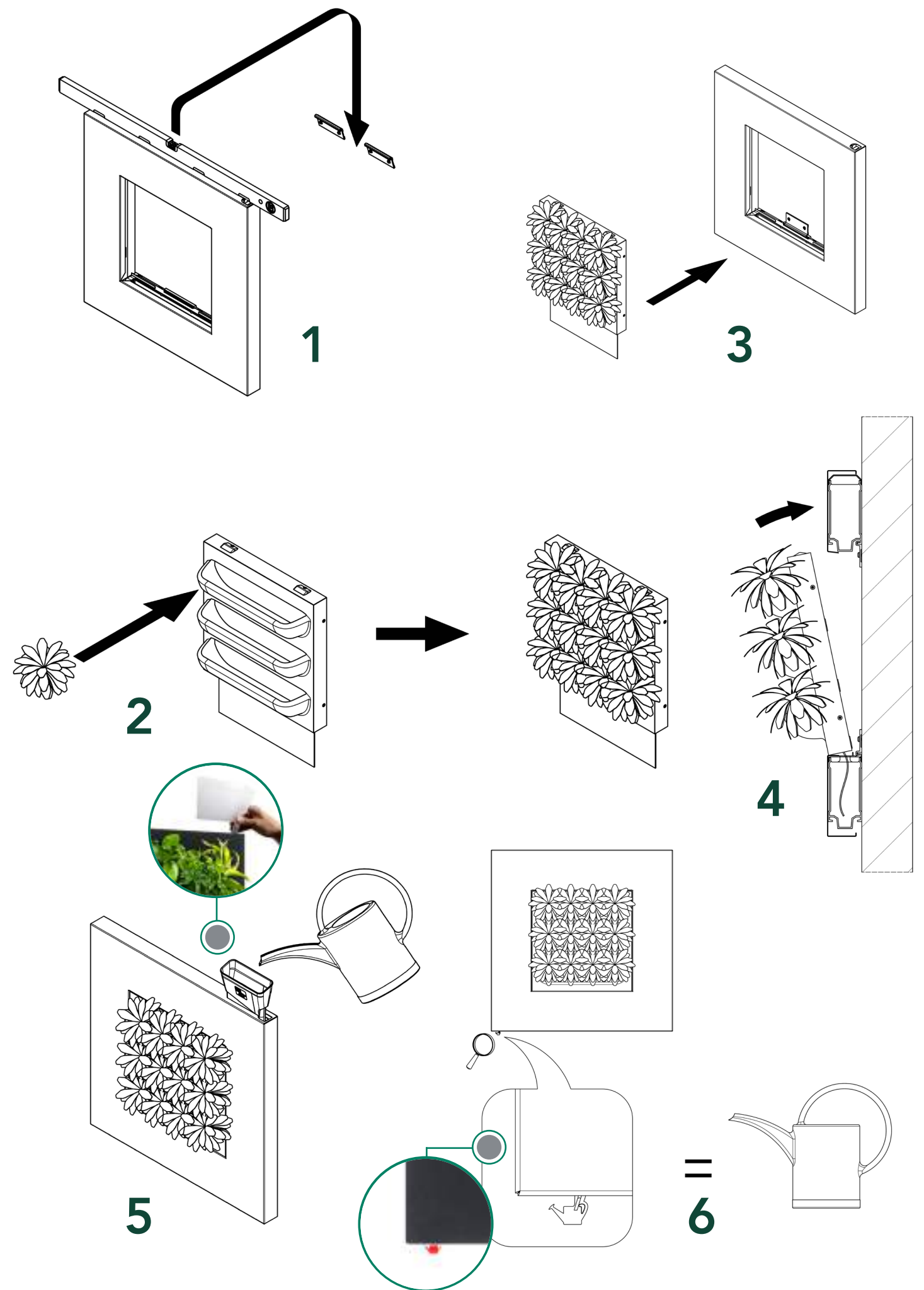
For installing the LivePicture, a level, pencil, and drill are required. All mounting materials are supplied. The LivePicture comes with instructions and can be easily mounted on a vertical surface with a few screws. The slots of the removable plant cassettes can be planted according to your own preference and taste. The choice of plants is dependent on the location where the LivePicture is placed. Have a look at our PlantGuide at our website for tips.

## WATERING

Due to the low maintenance system, the plants stay beautiful and lively for many years. The water reservoir is sufficient to provide the plants with water for 4-6 weeks. The LivePicture can be installed in any desired location since no electricity or pump is required. The empty indicator indicates when the water reservoir needs to be filled with water. The capillary action of the plant cassettes provides the plants with the right amount of water. The frame can be cleaned with a soft microfibre cloth and mild soap. The use of aggressive cleaning products is not recommended.

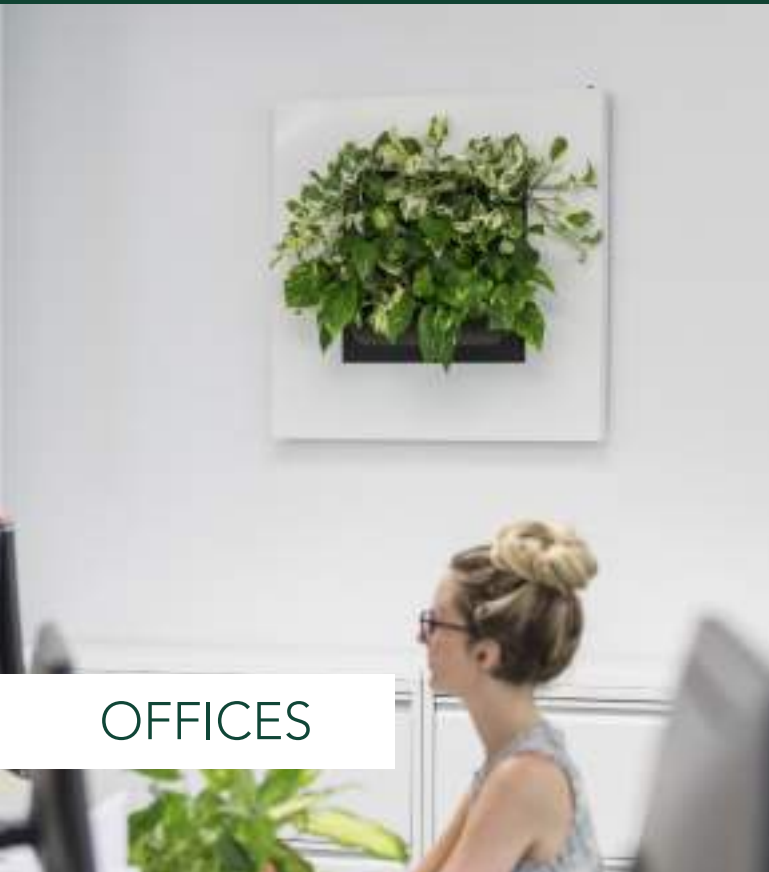
## PRUNING

Pruning of the plants in the cassettes can be done throughout the year. By pruning the dead or unhealthy parts, new growth is stimulated. The planting becomes more compact, fuller and retains its fresh appearance.

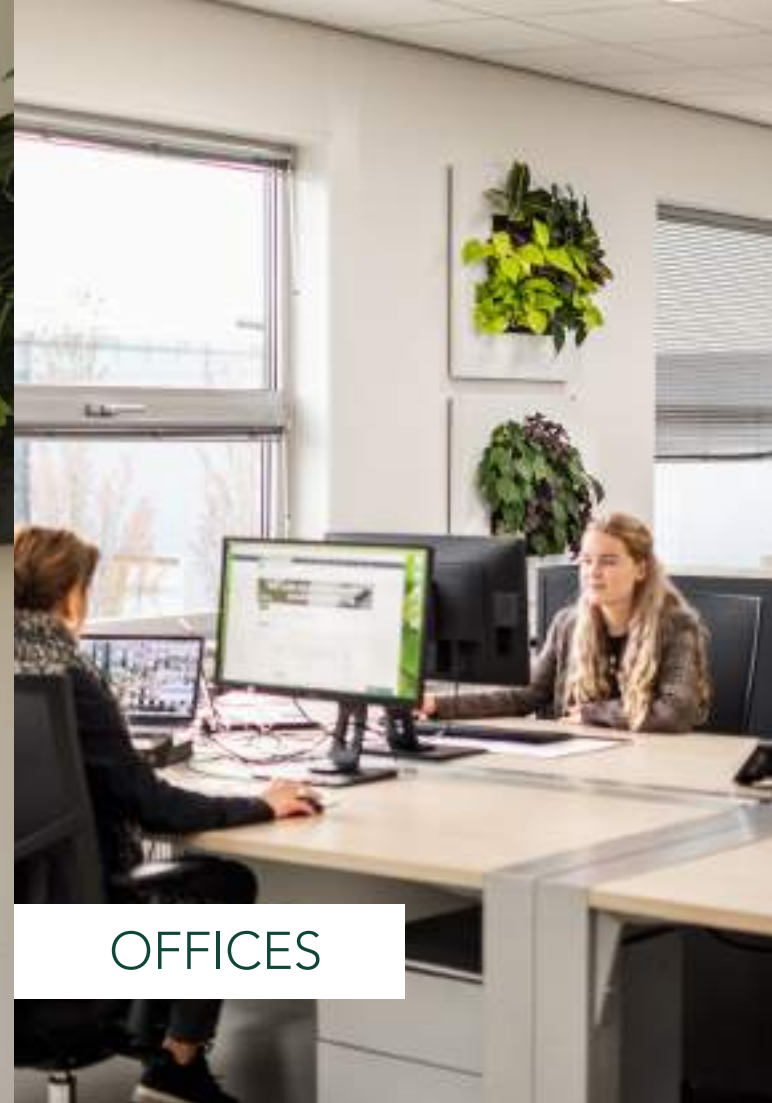




# REFERENCES AND APPLICATIONS



OFFICES



OFFICES



OFFICES



OFFICES

